

INSECT CONTROL UNIT



I-TRAP 30 LED

WALL MOUNTING SYSTEM.

With its innovative design, the i-trap 30 is recommended for use in homes, offices, shops and restaurants. The i-trap is constructed in such a way that the UV-A light is directed upwards.



ALCOCHEM
HYGIENE

Energy saving & effective control go hand in hand



i-trap 30 LED wall mounting system.

With its discreet design, the i-trap 30 LED is recommended for use in shops and restaurants and dry industrial environments..

Easy to service, stylish and effective; the i-trap 30 LED offers it all.



LED lamps

LED technology offers clear advantages in terms of efficiency (lower energy consumption) and its footprint (compactness)



Glue boards

Insects are caught on a glue layer, which preserves them over time. The caught insects can be counted and insect species can be analysed, which offers clear advantages in an IPM approach.

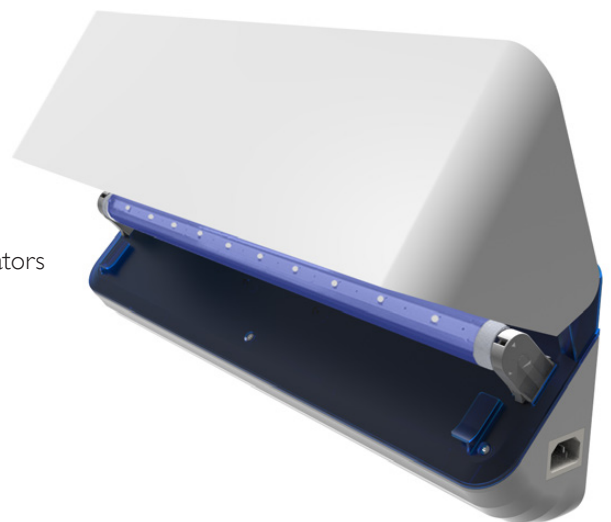
10 reasons to start using the i-trap 30 LED:

- Effective & proven design
- Energy saving UV-A LED technology offers over 45 kW of savings per unit per year.
- 3 year lifespan (25.000 hrs) of the UV-A LED lamp
- Environmental friendly: no restricted chemicals used in the product design.
- RoHS / REACH / ISO and CB compliant
- Fast and simple maintenance of the unit.
- Optimized glue board offers fast catch results and a fast analysis
- High quality casing offers over 5 years of operational use
- Fast mounting and fast service

Guarantee LED lamp: 2 years on electrical failures

Technical specifications

Area coverage	: 30-50 m ²
Light source	: 1x 15 Watt Astron UV-A LED lamp
Type of UV lamps	: UV LED Lamps RoHS certified
Electrical supply	: 100-240V ~ 50-60 Hz
Catch specifications	: By means of long life glue board
Power consumption	: 11 W
Weight	: 2 Kg
Degree of protection	: IP 20 (drip proof)
Guarantee	: 2 year return to base
Int. building norm	: acc. IEC-335-259 int. standard for insect exterminators
Lamp life time	: 25.000 hrs (*)
Dimensions (L x D x H)	: 494 x 147 x 165 mm
CE-approval	: Yes
Mounting position	: Wall mounted
Cable	: Included
Packaging	: Full color box included
Manual	: Enclosed with the unit in English
Service	: Unit can be dismantled without special tools



(*) after 25.000 hours a loss of 30% in efficiency has to be expected and lamps need to be replaced